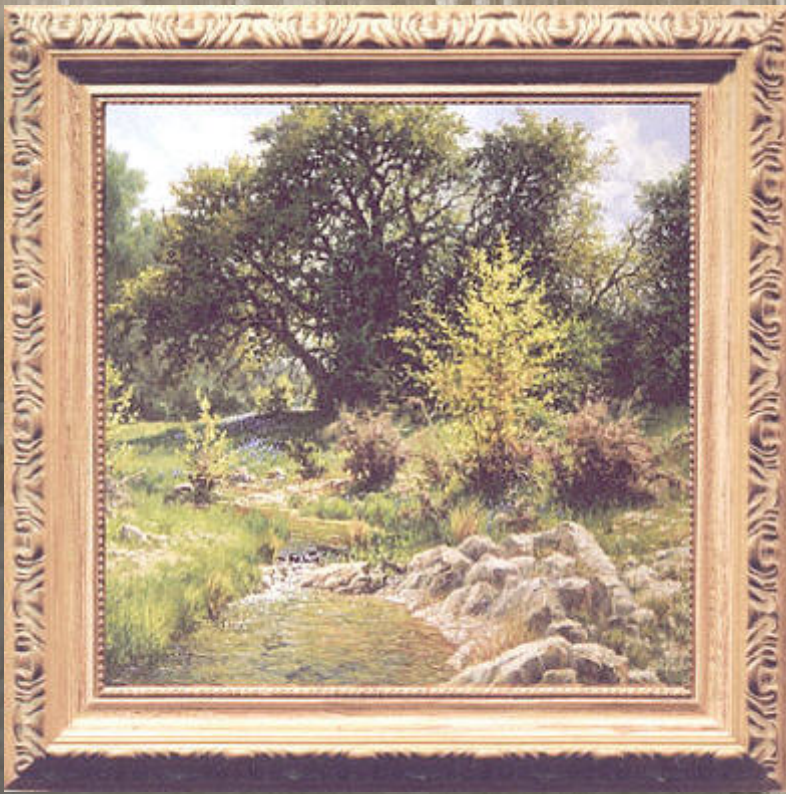


Hagerman Art

Exhibit and Sale Preview



SPRING LIGHT

20" x 20" Oil \$2700.00

This scene beckoned to be painted. The backlit sunlight this spring afternoon, was causing the new leaves on the middle ground tree to shine and glow against the darker shadowed oaks behind. The sun's drama continues as it bathes the scene with its warmth causing the water to glisten with sun sparkles as the stream noisily gurgles and spills over the rocks twisting its way on its forward trek through the landscape.

Haley Memorial Library & History Center
1805 W. Indiana Ave. - Midland, TX
December 8-27, 2003
(432) 682-5785

www.HagermanArt.com

Note: All Images in this document are copyrighted by the artist William Hagerman

Hagerman Art Exhibit and Sale



AUTUMN IN NOGAL CANYON
5" x 7" Oil \$800.00

This painting was from my first visit to Nogal canyon near Ruidoso, NM. There was several lovely spots for painting. The shadowed background provided a nice element of contrast enhancing the sunlit trees. Also adding to the appeal of the area are the flecks of red color punctuated through this canyon from the red maple trees.



FALL COLOR NEAR MONJEAU
5" x 7" Oil \$800.00

This is another painting derived from my first visit to the Ruidoso, NM area during the fall of the year.

I could not have asked for better weather. It was cool but the sun was warm and the scene had all the right elements. Even the clouds were in the right place. This area has provided me with several paintings.



FALL TRIPTYCH
Combined Image Approximately 2" x 8"
Oil \$800.00

I've painted other miniatures, but this is a departure not only in its presentation, but in that it's the first triptych I've done, in which it's a continuation of the same scene. Even though all three sections can be viewed as a whole, each section is also balanced making for its own small composition.

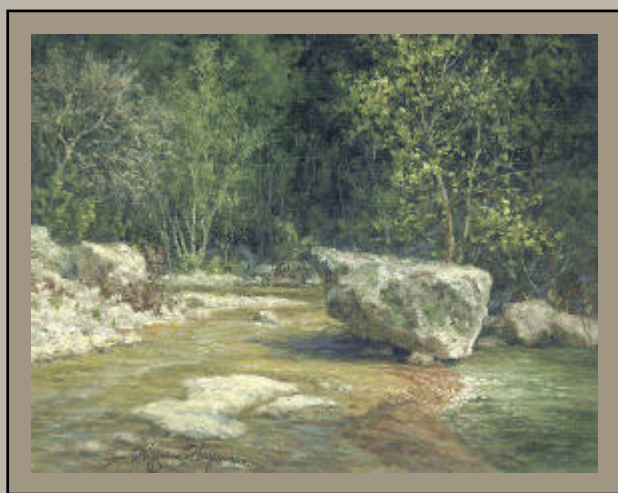
The mood is of a heavy moisture laden atmosphere on a cool and misty autumn morning. The scene is soft and serene, yet rich in color.



NEAR WILLOW CITY

8" x 10" Oil \$850.00

A popular destination for tourists and lovers of the Texas state flower, is the drive thru the countryside on Willow City Loop between Fredericksburg and Llano during spring of the year. However, this scene is on private property well off the main road that I had the privilege of being on. This was a naturally existing composition and I enjoyed painting all the different elements. However, I decided I had enough elements when two cows showed up along with eighteen of their other cow friends and sprawled out all over the place. I should have put up a no loitering sign, but I doubt it would have done much good. They probably would have just knocked it down or at the very least ignored it. So I left and went to see what my other fellow artists were painting some distance away. The other artists included Dalhart Windberg, his son Michael, Mark Pettit and C. L. Curry.



THE ROCK

6" x 8" Oil \$800.00

Years ago, I was demonstrating to an art student who was having trouble with painting rocks. Upon completing the demonstration, my student looked at me out of the corner of her eye and with her dry sense of humor said "You must have been a rock in a former life". I don't however, believe in such notions, but if I did, I wouldn't have minded being this particular rock, since it resides in such a picturesque location in the Texas Hill Country near Vanderpool.

MEANDERING STREAM

36" x 18" Oil \$3800.00

This painting is a definite change in format from the traditional rectangular paintings that I do. It offers a vertical panorama of nature and gives a departure and new perspective to a familiar subject. The challenge in such a format is to keep the upper and lower portions of the scene cohesive due to it's height and narrow width. Therefore, I strategically used the lines of the stream compositionally to lead your eye upwards and back into the painting.



AUTUMN FOREST

24" x 34" Oil \$3900.00

You might describe this painting as one of calmness as you mentally walk along a trail observing nature as shafts of warm late evening light stream across the ground. You can almost here the sound of soft rustling leaves as a faint breeze blows through the trees, and feel the refreshing coolness of an autumn evening in the woods.

What establishes such a mood in a painting? Well, there isn't any special paint or spray that you put on a painting called mood mist, but if you hear of one, let me know.

Mood is established through the senses. However, I can't make my painting a scratch and sniff to include the smells of nature, or include the sounds, but through observation and the use of proper color, values, and edges while I paint, I'm able to establish the visual cues that evoke a particular mood.



ALONG JAMES RIVER ROAD

9" x 12" Oil \$925.00

This painting was started on location off the beaten path with the nearest town of Mason, TX at least a half hour drive away. But, I didn't mind. I enjoyed the quiet solitude as I painted. Although the three wild turkeys that came down to the water just at the point where the stream falls over the rocks were not pleased to see me. They were quite haste in their departure. I was completely offended by their thinking I was going to harm them. How rude that they didn't even stick around to let me photograph them or explain what an honor it would be for them to be included in one of my paintings. Such arrogance isn't becoming. Of course I'm talking about the turkey's arrogance, not mine.



WARM AUTUMN REFLECTIONS

24" x 30" Oil \$3800.00

This scene was located on a remote section of private property deep in the Texas Hill Country between Vanderpool and Utopia that I had the pleasure of visiting thru the kind generosity of the land owners. The late evening light breaking through the canyon on the autumn trees caused them to burst with dramatic color. The reflections in the water also became saturated with deep warm hues. This combination bathed the scene with a warm aura while the indirect light from the blue sky illuminated the rocks in shadow with a very cool blue. This painting was accomplished through the use of an oil study painted on location to capture these fleeting color effects.

My concentration was only broke when I heard an awful cry from a fellow artist who was painting another scene directly behind me. Her nearly completed color study almost started down a new path when it fell off her easel into the water and a small current in the stream was about to take it sight seeing.

H Hagerman Art Exhibit and Sale
www.HagermanArt.com