



# Hagerman Art News

Winter 2007

[www.HagermanArt.com](http://www.HagermanArt.com)

Realistic Landscape Paintings



“Nocturnal Mood” 14” x 18” Oil

## IN THIS ISSUE:

- Award Recognition at the American Plains Artists Show
- American Art in Miniature at the Gilcrease Museum
  - Haley Library Art Exhibit and Sale Preview
  - Quality Picture Framing from Swartz Studio

All works in this document are copyrighted by the artist William Hagerman



*Welcome to this issue of Hagerman Art News!*

**Award Recognition at the  
American Plains Artists 23 rd Annual  
Juried Exhibit**

September 14, 2007 marked the opening of the American Plains Artists Juried Show at Loch Vale Fine Art Gallery in Estes Park, Colorado. This years show was a small works format and the painting to the right, a 6" x 8" oil, titled "Wyoming Plains" received an Award of Excellence from this years juror, artist, Richard Iams.

This painting will also be included in my one person show at the Haley Library and History Center opening December 11, 2007.



**"Cool Morning" 9" x 12" Oil**

**American Art in Miniature Show & Sale  
at the Gilcrease Museum  
November 1, 2007**

I felt privileged to be invited back to the American Art in Miniature show at the Gilcrease Museum in Tulsa, Oklahoma.

The painting to the left was one of over 200 artists works featured and to have my painting sell the opening night was certainly an added bonus.



# Hagerman Art

## Exhibit and Sale Preview



### THE DELIGHT OF AUTUMN

30" x 24" Oil \$4500.00

*The Autumn season is truly a delight when the right weather conditions occur, prompting once green leaves to burst forth into new colors!*

*Although this scene was viewed on an overcast day, I decided to transform it with paint, into a scene with early morning light as it evaporates the moisture in the air and clouds begin to lift and a beautiful autumn day is called forth!*

***Haley Memorial Library & History Center***

***1805 W. Indiana Ave. - Midland, TX***

***Reception December 11, 2007***

***For purchase info contact the Haley at (432) 682-5785***

***[www.HagermanArt.com](http://www.HagermanArt.com)***

*Note: All Images in this document are copyrighted by the artist William Hagerman*

# Hagerman Art Exhibit and Sale



## NOCTURNAL MOOD

14"x 18" Oil \$2500.00

*It's been many years since having painted a moonlit scene. Many are painted with a blue green hue. However, with this one I altered the color scheme to introduce some subtle warm variations.*

*Even though the scene could possibly be found somewhere here in West Texas, it's mostly a product of my imagination.*



## END OF THE DAY

12"x 17" Oil \$2400.00

*Viewing the landscape in late evening light has always been a favorite. Even though it doesn't last long, it does present some beautiful lighting effects such as depicted here, where the strength of the sun's rays wrap around and highlight the edges of the tree.*

*It also produces some nice colors in the sky!*



## A TOUCH OF WINTER

24"x 46" Oil \$5500.00

*Painting snow is fun and challenging. Fortunately I didn't have to stand in it to paint this scene. Although I have done that, only it was a much smaller painting! Presenting this scene with a more elongated format added to the uniqueness of the composition. The scene itself is based on a view near Ruidoso, New Mexico. The mountain is Sierra Blanca.*



### **ALONG THE TRAIL**

9" x 12" Oil \$1100.00

*This scene was inspired by a photograph I had taken several years ago while walking along this scenic trail. However, through the power of paint, I was able to add in the red tone tree for a punch of color.*



### **CREEK SIDE COLOR**

16" x 20" Watercolor on Watercolor Canvas \$1600.00

*Although the subject of this painting is a familiar one, there is a significant difference. This is a watercolor painting! However, there's even more to it. Instead of being painted on paper, this painting is done on a specially treated archival canvas for use with watercolors.*

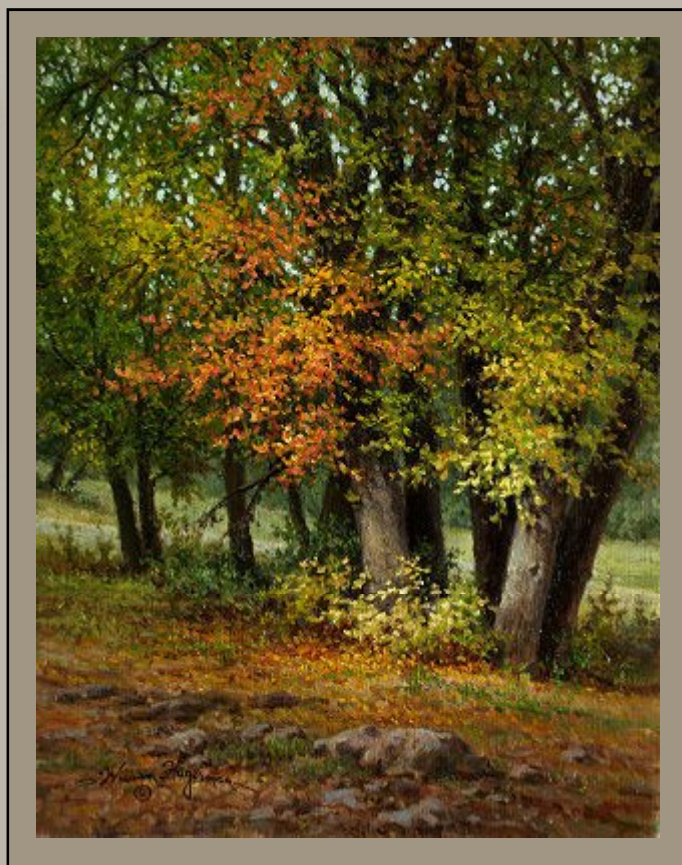
*It has a sprayed on protective UV coating and therefore does not need the traditional glass over the painting to protect it. In this way it gives a different look and a vibrancy all of its own.*

### **LEAVES OF AUTUMN**

14 x 11" Oil \$1950.00

*This grouping of Autumn trees was found in Nogal Canyon up in New Mexico. The soft evening light produced a calm mood.*

*The frame which is hand carved and no longer available blends well with the colors and completes the scene.*



*Hagerman Art Exhibit and Sale*





**HIGHLAND GRANDEUR**

24" x 36" Oil \$4900.00

*After painting several different smaller views of this mountain, in the north east part of New Mexico, I decided the grandeur of this view warranted a larger format.*

*I also decided to wash away the road and put in its place a calm little stream to lead the eye into the scene.*



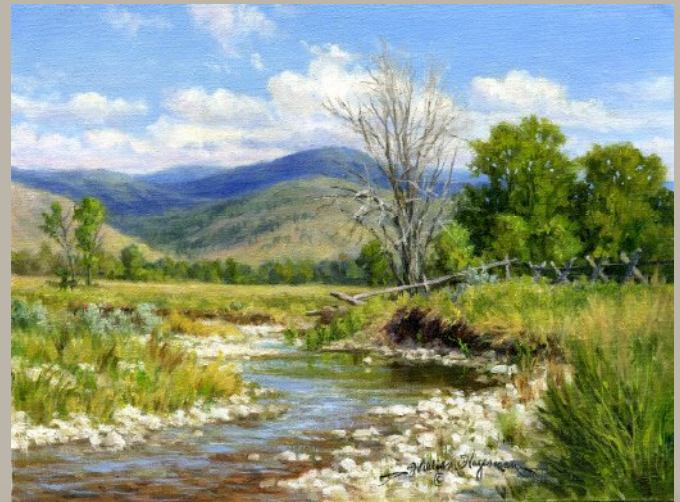
**YUCCA IN FULL BLOOM**

8" x 10" Oil \$900.00

*Somewhere on the back roads, perhaps in Mason County Texas I came across this grouping of Yucca.*

*Even when there's not an abundance of wildflowers in the spring, sometimes it's compensated for with the blooms of the yucca glowing in the sunlight against a dark blue sky!*

*However, I just had to add a hint of a few more flowers to my scene.*



**WYOMING PLAINS**

6" x 8" Oil \$800.00

*This small painting was started and left as a color study while visiting Teton National Park.*

*The Teton's were obscured by too much haze in the air, so I looked in the opposite direction along another area of the park and found this scene to paint.*

*I decided to finish out the painting, so I could include it in the*

*American Plains Artists 23 rd Annual Juried Exhibit.*

*It was shown this fall at Loch Vale Fine Art in Estes Park, Colorado. It received an award of excellence from artist and juror for the show, Richard Iams.*





**SPRINGTIME ARRANGEMENT**

11" x 14" Oil \$1950.00

*I was drawn to this simple little scene due to the variety of spring greens found in the vegetation.*

*The bluebonnets and white flowers were added as accents which helped to enhance the scene.*



**IDEAL COUNTRY**

20" x 30" Oil \$4000.00

*I love old barns. When I first saw this pastoral scene, minus the bluebonnets, several sheep were out grazing.*

*My photo didn't show the sheep much in detail so I opted not to include them, but add one of Texas' favorite flowers in their place.*

*When I last saw this scene, my heart sank. A new large metal barn void of any artistic character had been built and ruined the view.*

*This new barn may be more practical in terms of use, but sadly such progress is making this ideal country setting less ideal.*

**INTERIOR & EXTERIOR VIEWS OF THE HALEY LIBRARY**



# Quality Picture Framing

*They say a picture is worth a thousand words, but a poorly framed one might have a few negative remarks. That's why I have come to rely on the services of Swartz Framing Studio to enhance the presentation of my work with custom frames. Many of which are in my exhibit. I have worked with Swartz Framing Studio for many years and highly recommend them.*

*Swartz Framing was established 38 years ago and was purchased by Don Ritchey 22 years ago. Don is a Certified Picture Framer (CPF) and was Certified by the Professional Picture Framers Association (PPFA) in 1986 after meeting required experience and then being examined. He specializes in conservation framing of fine art and maintains the highest level of knowledge through continuing education each year. To maintain his certification he must take specific courses related to the most recent knowledge of proper framing techniques.*

*Swartz Framing Studio is a member of PPFPA, Permian Basin Better Business Bureau and the Midland Chamber of Commerce.*

*I thank Don for his help these many years and his quality work.*

**Swartz Framing Studio**  
2101 W. Wadley, Ste. 42  
Midland, Texas 79705  
(432) 684-3971



*These are just a few of the examples of framing done at Swartz Framing Studio*



[www.HagermanArt.com](http://www.HagermanArt.com)